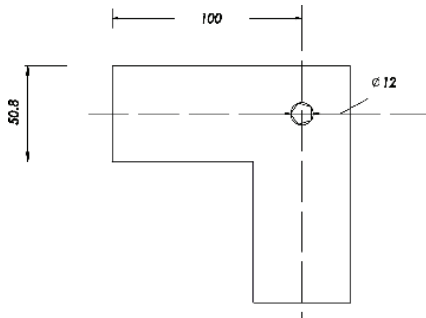


Round Corner Posts Stainless Steel 90° Angle

Round Handrail Top



Top view of Corner post bracket for round handrail.



This post is very easy to install. Simply slide your handrail into the mitred joiner corner piece then lower into position and tighten the bolt at the top of the corner piece.

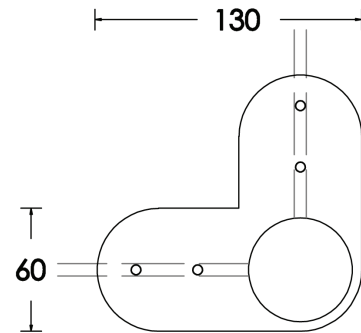
The overall height of this post is 1010mm

Flat Handrail Top



All Wire Posts come standard at 960mm height is taken from the bottom of the base plate to the centre of the top bracket (where the handrail is connected)

Top view of Corner post bracket for Flat Handrail



This bracket is welded straight on the 50.8mm post (see above). This is done for strength and to achieve a clean and streamline look. Simply attach your flat handrail using rivets or screws.

The overall height of this post is 960mm

It is highly recommended to use a 3mm (wall thickness) corner or end post, this will help prevent bowing of the post when the wires are tightened.

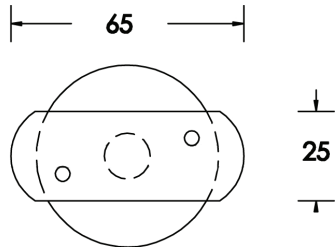
Round End Posts Stainless Steel G316

POSTS

Adjustable Top (Round & Flat)



Top view of adjustable bracket for round or flat handrail.

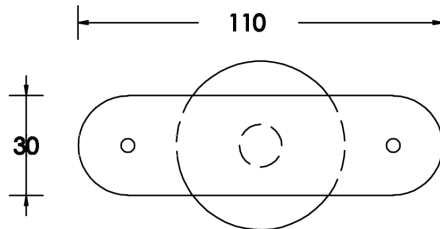


This bracket is unique in the way you can adjust the top to whatever angle you wish by simply loosening off the grub screw finding your angle then re-tightening the grub screw. This is ideal for stairs or wherever an angle is required.

Round Handrail Top



Top view of bracket for round handrail.



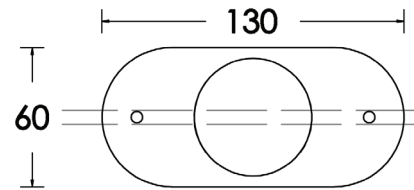
This bracket is attached to the post via a pin which is welded to a cap at the top of the post. This is a standard post to suit a round rail.

Flat Handrail Top



All Wire Posts come standard at 960mm height is taken from the bottom of the base plate to the centre of the top bracket (where the handrail is connected)

Top view of bracket for flat handrail.



This bracket is welded straight to the 50.8mm post. This is done for strength and to achieve a clean, streamline look. Simply attach a flat handrail using rivets or screws.

It is highly recommended that you use the same top rail bracket on both the end and intermediate posts. This will ensure you get a good fixing point on both sides of the post into the handrail which will increase its strength.



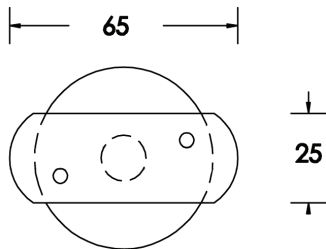
Round Intermediate Posts Stainless Steel G316

POSTS

Adjustable Top (Round & Flat)

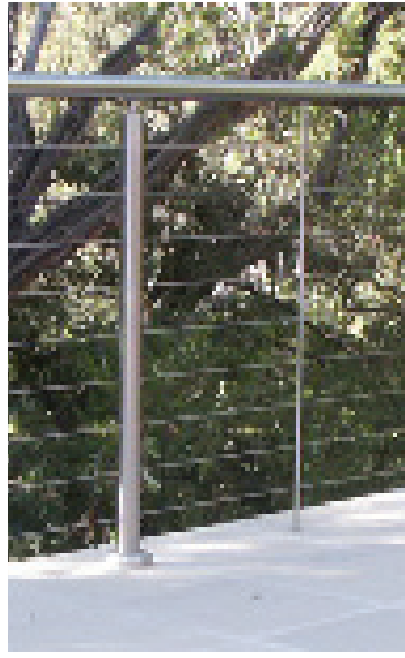


Top view of adjustable bracket for round or flat handrail.

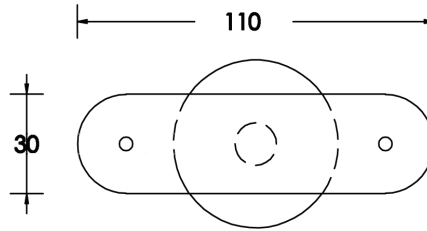


This bracket is unique in the way you can adjust the top to whatever angle you wish by simply loosening off the grub screw finding your angle then re-tightening the grub screw. This is ideal for stairs or wherever an angle is required.

Round Handrail Top



Top view of bracket for round handrail.

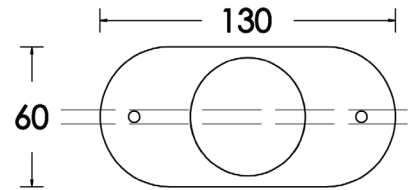


This bracket is attached to the post via a pin which is welded to a cap at the top of the post. This is a standard post to suit a round rail.

Flat Handrail Top



Top view of bracket for flat handrail.



This bracket is welded straight to the 50.8mm post. This is done for strength and to achieve a clean, streamline look. Simply attach a flat handrail using rivets or screws.

It is highly recommended that you use the same top rail bracket on both the end and intermediate posts. This will ensure you get a good

All Wire Posts come standard at 960mm height is taken from the bottom of the base plate to the centre of the top bracket (where the handrail is connected)