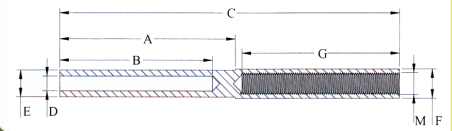


Terminals and Terminations

INTERNAL THREAD TERMINALS AISI 316

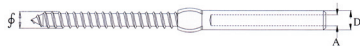
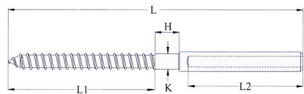
CODE	A mm	B mm	C mm	WIRE SIZE	E mm	F mm	G mm	M mm
------	---------	---------	---------	--------------	---------	---------	---------	---------

SS-7811-503	46.00	38.00	88.00	1/8"	6.35	8.00	35.00	M5
SS-7811-604	50.00	45.00	95.00	(4mm) 5/32"	7.50	8.00	35.00	M6



SWAGE STUD WITH LAG SCREW AISI 316

CODE	SUIT WIRE	D mm	L mm	L1 mm	L2 mm	K mm	H mm
06	1/8"	6.30 RHT	6*2.60	97.00	48.00	38.00	5.00 8.00
06	1/8"	6.30 LHT	6*2.60	97.00	48.00	38.00	5.00 8.00



Use left hand one end and right hand thread the other so that when you screw both fittings into your post at the same time tension is gained due to one end turns clockwise and the other anti clockwise.



Hooks

PELICAN HOOK AISI 316

BODY ONLY

CODE	L mm	A mm	D mm	THREAD
------	---------	---------	---------	--------

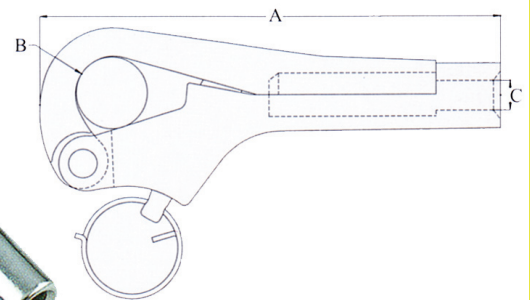
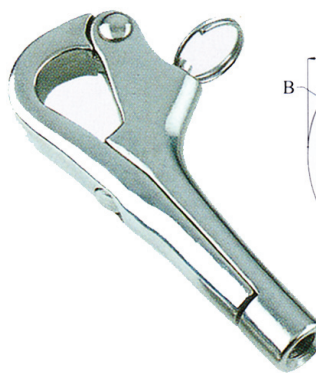
SS-2831-13	75mm	13	11	M6
SS-2831-14	100mm	15	14	M8

THREADED TERMINALS TO SUIT SS-2831-13

SS-7801-02M	3/32" WIRE	M6 THREAD
SS-7801-03M	1/8" WIRE	M6 THREAD
SS-7801-046	5/32" WIRE	M6 THREAD

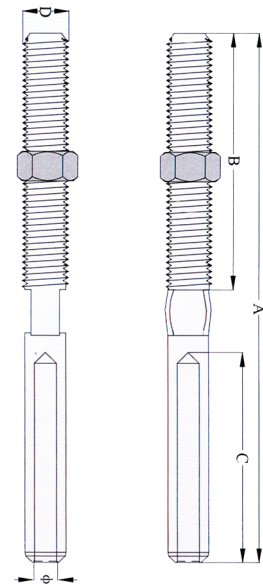
THREADED TERMINALS TO SUIT SS-2831-14

SS-7801-04M	5/32" WIRE	M8 THREAD
SS-7801-05M	3/16" WIRE	M8 THREAD



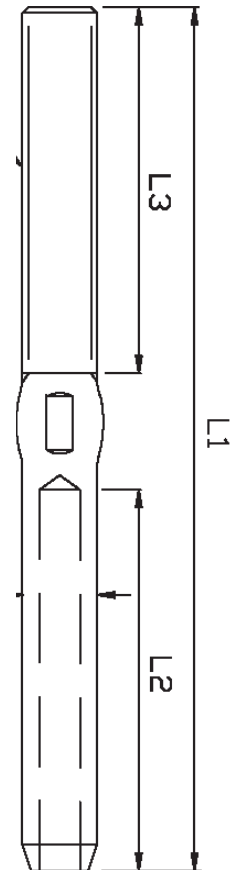
SWAGE STUD (THREADED TERMINALS) AISI 316

CODE	WIRE SIZE	A mm	B mm	C mm	D mm
SS-7801M-305	2.5mm	86.00	40.00	35.00	M5
SS-7801-305	1/8"	90.00	40.00	40.00	M5
SS-7801-305L	1/8"	90.00	40.00	40.00	M5 LHT
SS-7801-03M	1/8"	95.00	45.00	40.00	M6
SS-7801-03L	1/8"	95.00	45.00	40.00	M6 LHT
SS-7801M-03M	3.00mm	95.00	45.00	40.00	M6
SS-7801-046	4mm 5/32"	102.00	45.00	45.00	M6
SS-7801-046L	4mm 5/32"	102.00	45.00	45.00	M6 LHT
SS-7801-04M	4mm 5/32"	120.00	60.00	48.00	M8
SS-7801-04L	4mm 5/32"	120.00	60.00	48.00	M8 LHT
SS-7801-05M	5mm 3/16"	125.00	60.00	53.00	M8
SS-7801-05L	5mm 3/16"	125.00	60.00	53.00	M8 LHT
SS-7801-510	5mm 3/16"	135.00	65.00	58.00	M10
SS-7801-610	1/4"	144.00	65.00	65.00	M10
SS-7801-06M	1/4"	160.00	79.00	65.00	M12
SS-7801M-06M	6mm	160.00	79.00	65.00	M12
SS-7801-128	8mm 5/16"	180.00	79.00	83.00	M12
SS-7801-08M	8mm 5/16"	231.00	102.00	97.00	M16



BLUEWAVE SWAGE STUD (THREADED TERMINAL) AISI 316

CODE	WIRE DIA. MET	WIRE DIA. IMP	THREAD	L1 mm	L2 mm	L3 THREAD
BW-90306	3	1/8"	1/4" UNF	100	38	48
BW-90306M	3	1/8"	M6	100	38	48
BW-910306M	3	1/8"	M6 LEFT	100	38	48
BW-90406	4	5/32"	1/4" UNF	110	47	48
BW-90406M	4	5/32"	M6	110	45	48
BW-910406M	4	5/32"	M6 LEFT	110	45	48
BW-90408	4	5/32"	5/16" UNF	117	45	57
BW-90508	5	3/16"	5/16" UNF	123	51	57
BW-90610		1/4"	3/8" UNF	143	62	66
BW-900610	6		M10	145	64	63
BW-90611	6		7/16" UNF	157	66.5	65.5
BW-90612	6		1/2" UNF	162	80.5	68
BW-906312		1/4"	1/2" UNF	162	64	80
BW-90712	7	9/32"	1/2" UNF	170	70	80
BW-90812	8	5/16"	1/2" UNF	185	79	84
BW-90816	8	5/16"	5/8" UNF	203	100	89.5
BW-90916		3/8"	5/8" UNF	220	98.5	99
BW-91016	10		5/8" UNF	220	89	100
BW-90920		3/8"	3/4" UNF	230	89	120
BW-91020	10		3/4" UNF	230	120	93
BW-91220	12		3/4" UNF	245	120	106.5
BW-91320		1/2"	3/4" UNF	260	115	122
BW-91422	14		M22	295	132	140
BW-901425	14		1" UNF	335	140	170
BW-901625	16		1" UNF	355	160	170



- Left hand threaded terminals available on request.

